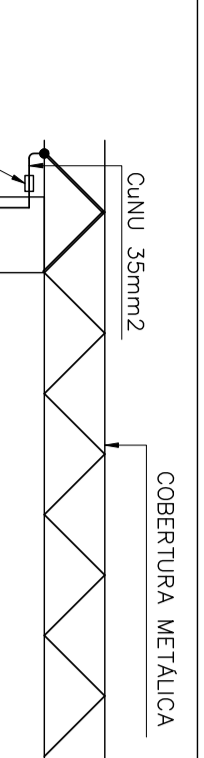
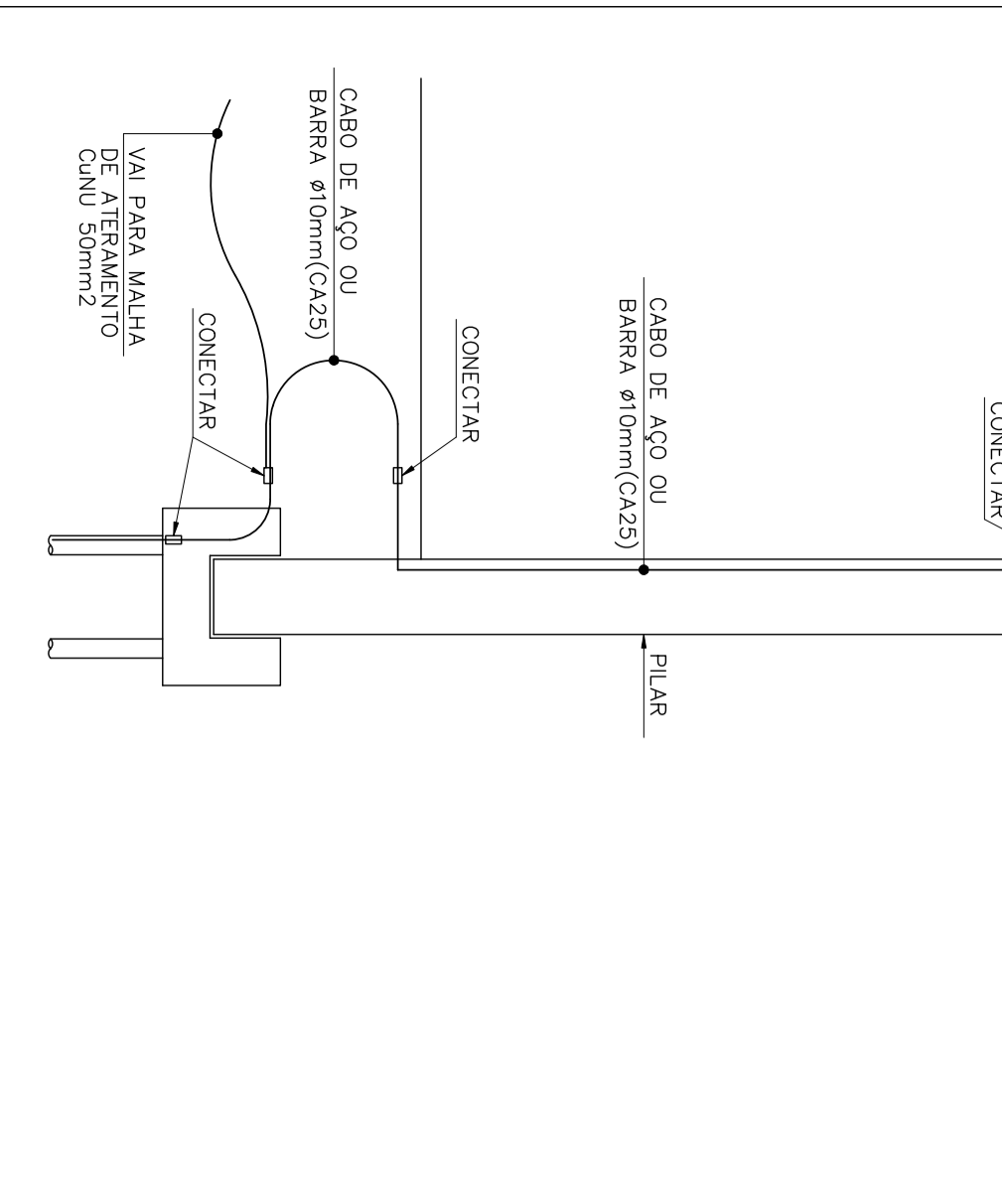


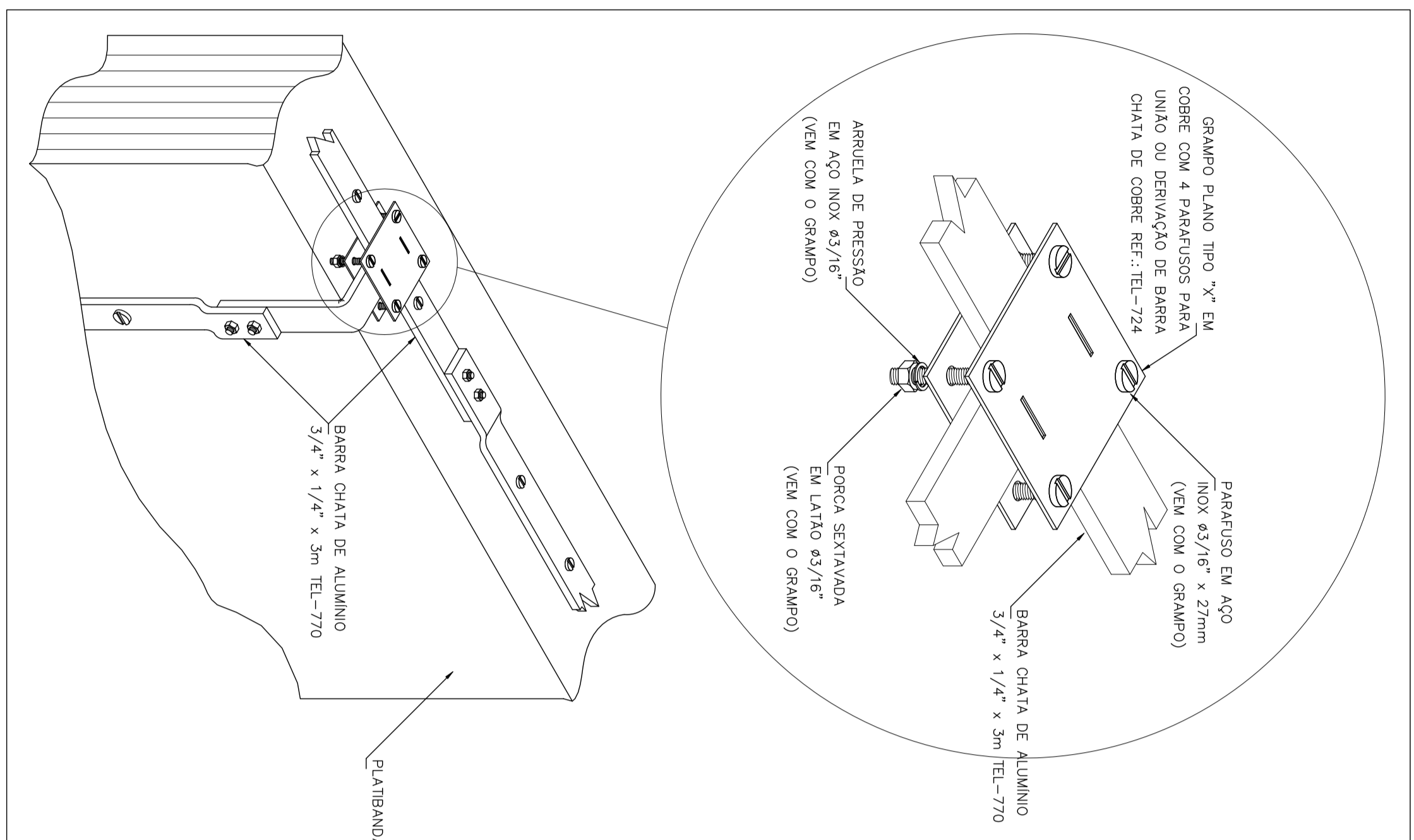
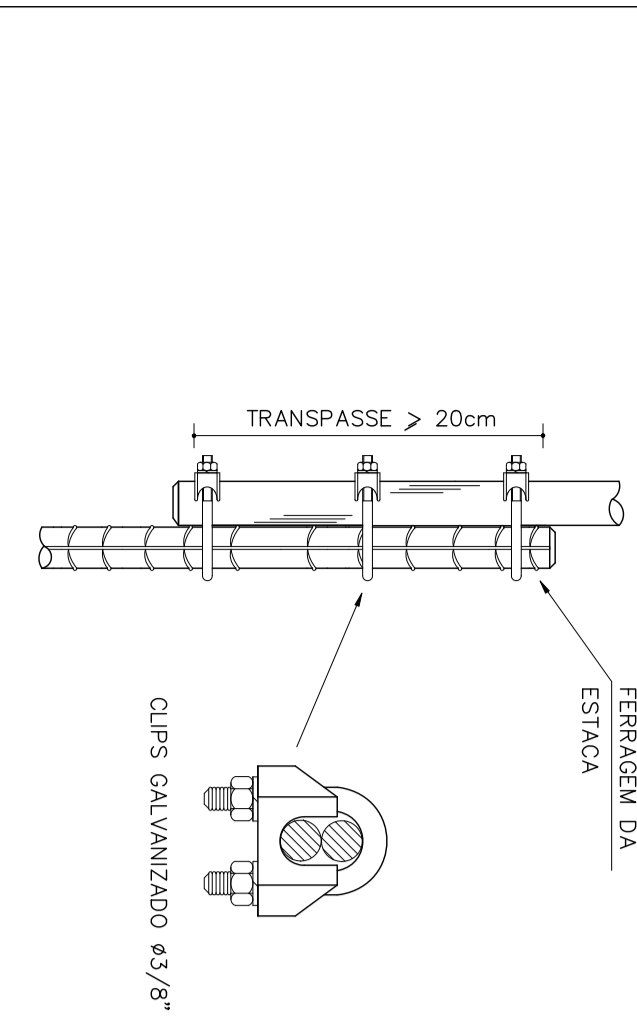
## PLANTA PAVIMENTO TERREO



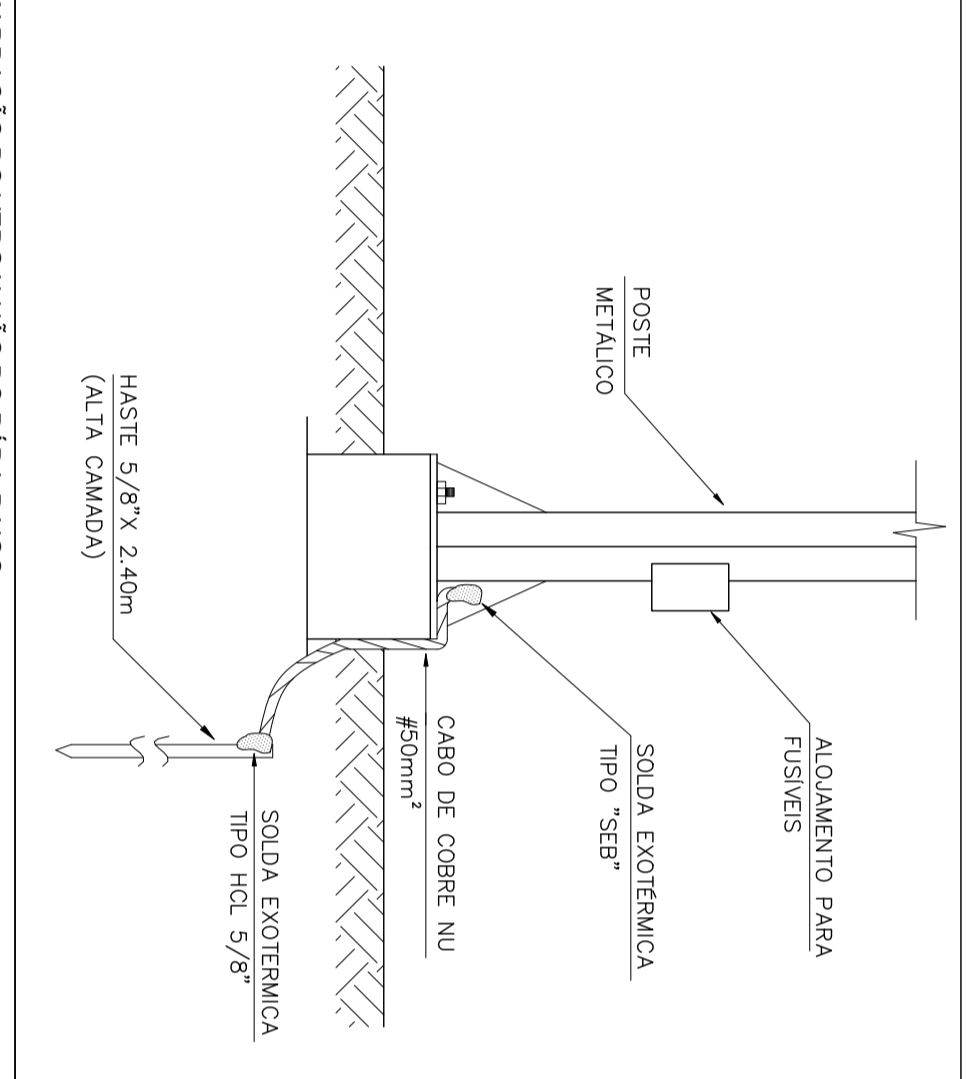
**DETALHE PARA INCORPORAÇÃO DO PÁRA-RAIOS À ESTRUTURA**



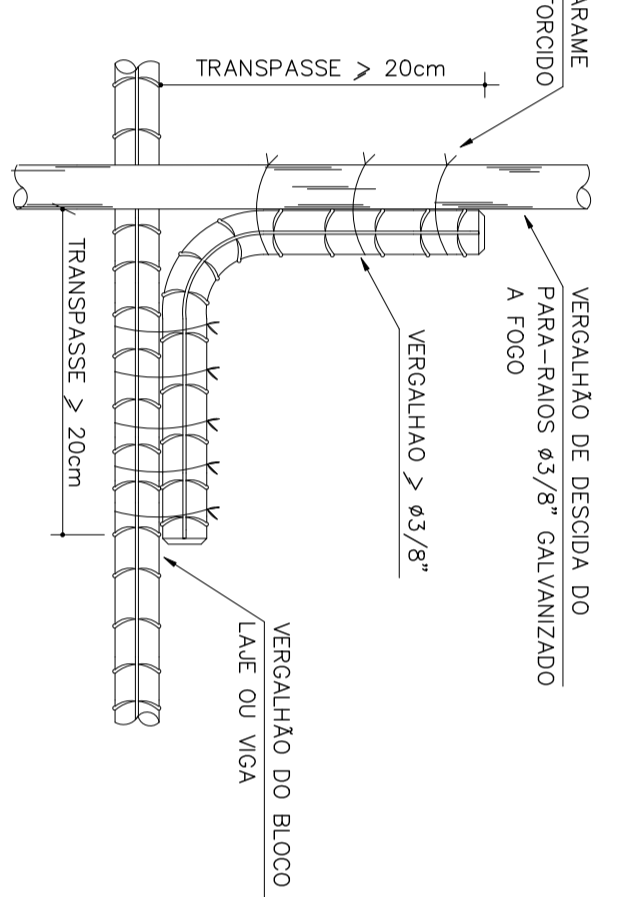
EMENDA DO VERGALHÃO DE DESCIDA FERRAGEM DA ESTACA



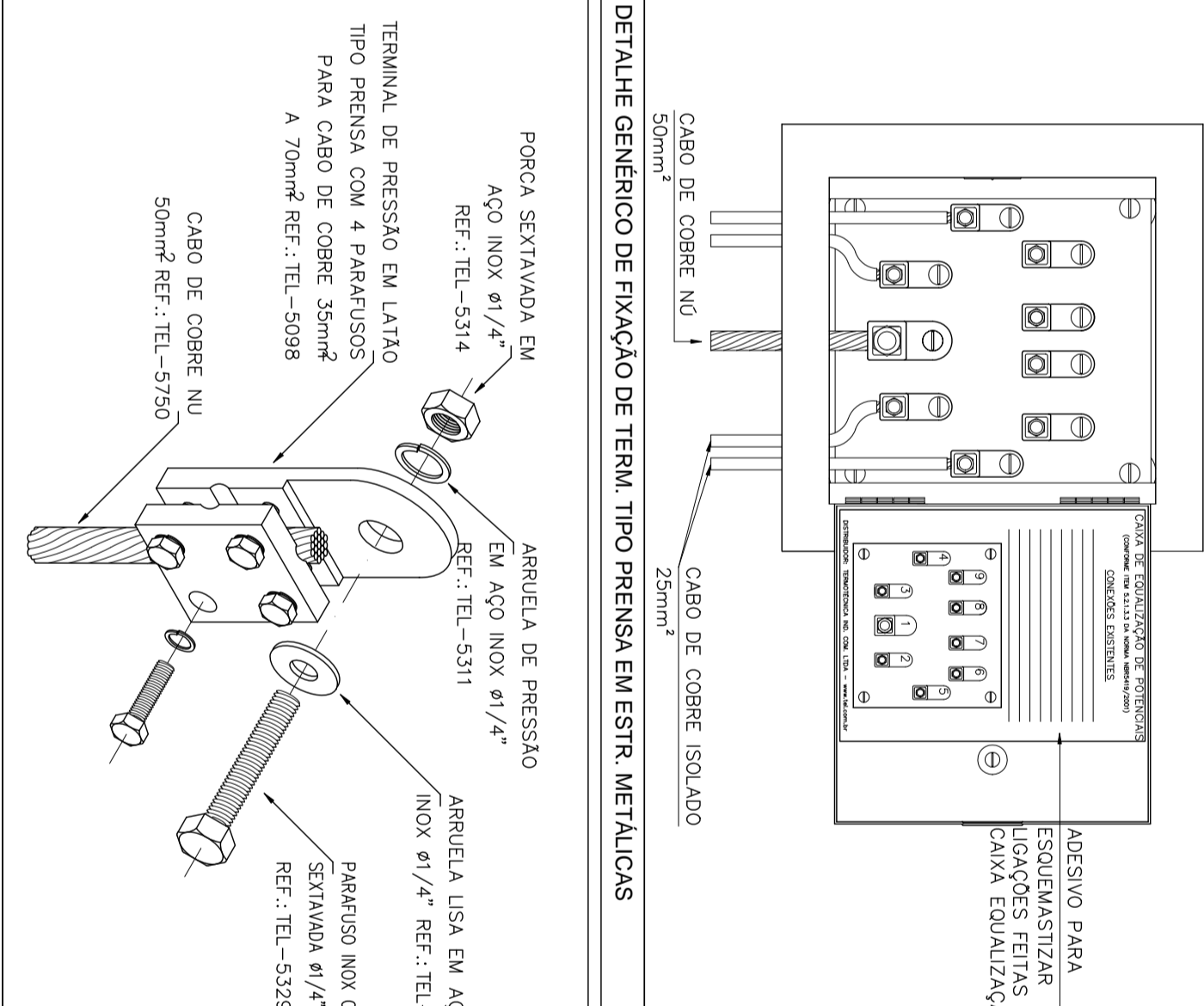
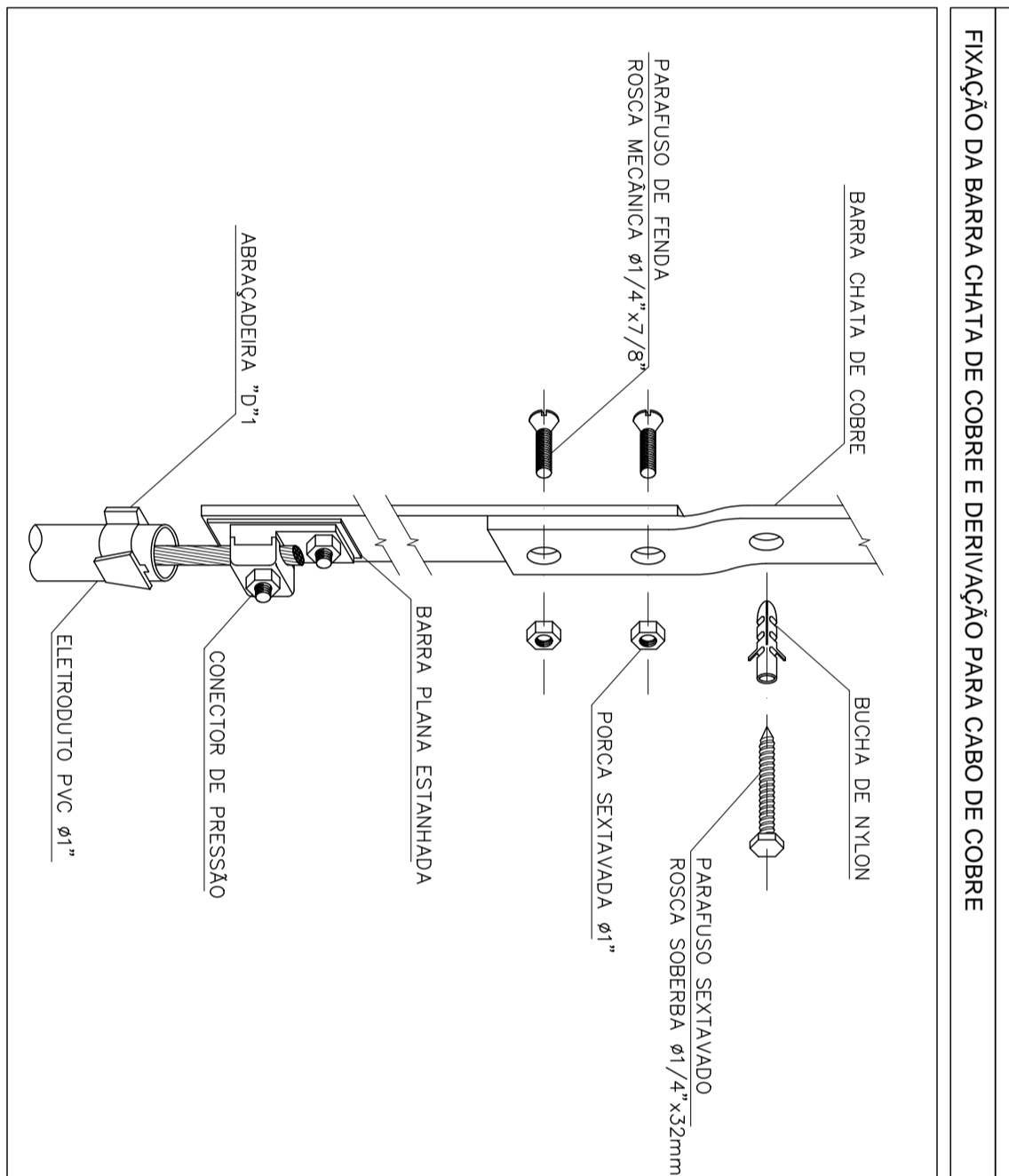
DETALHE DE CONEXÃO E DESCIDA DAS BARRAS CHATAS DE ALUMÍNIO



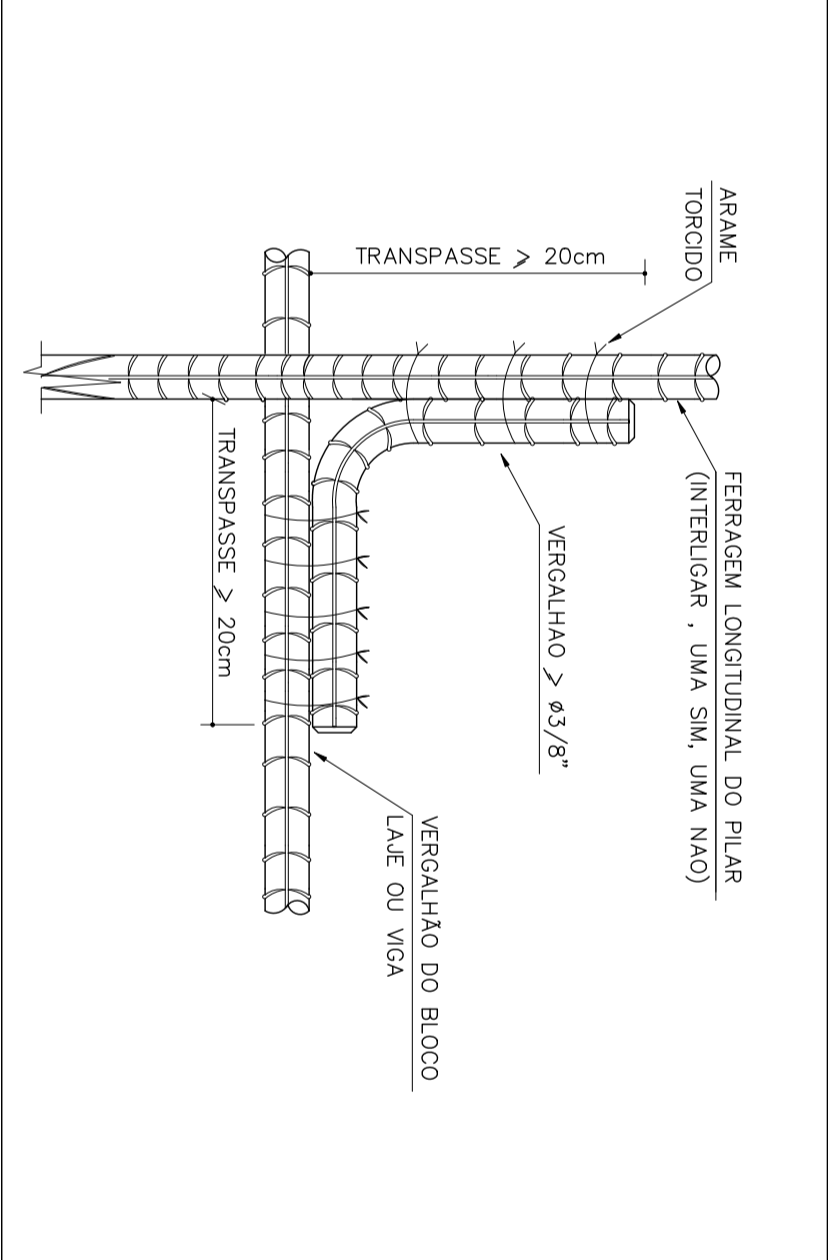
### DETALHE DE ATERRAMENTO DOS POSTES



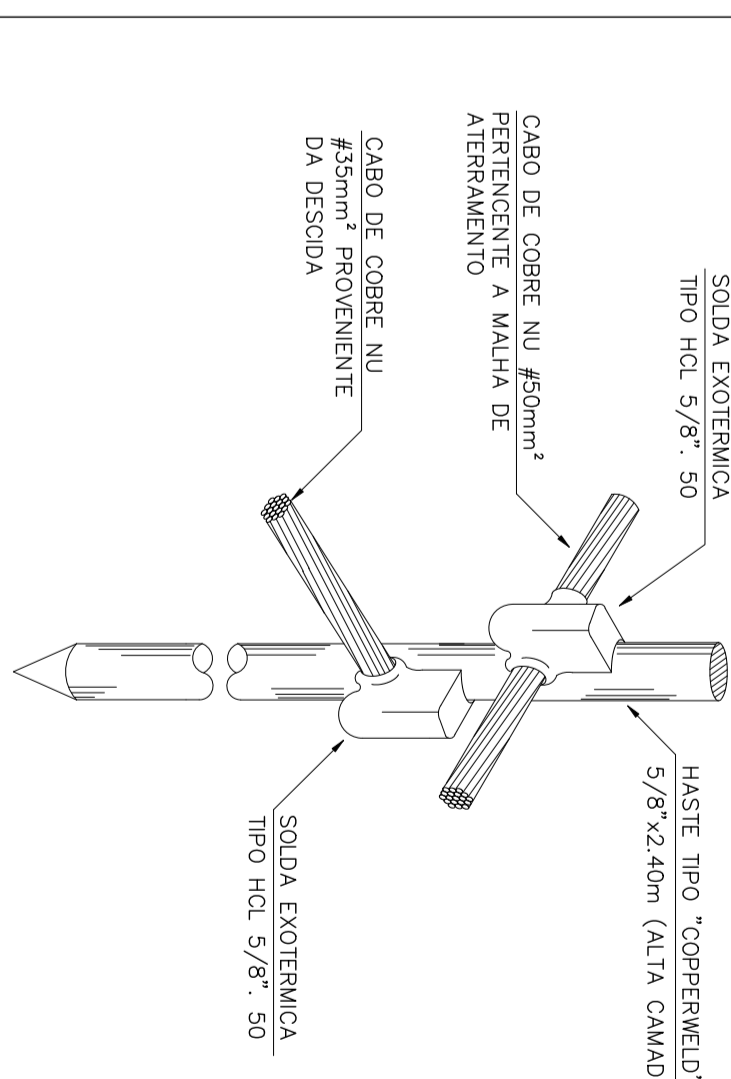
AMARRAÇÃO DO VERGALHÃO DO PÁRA-RAIOS



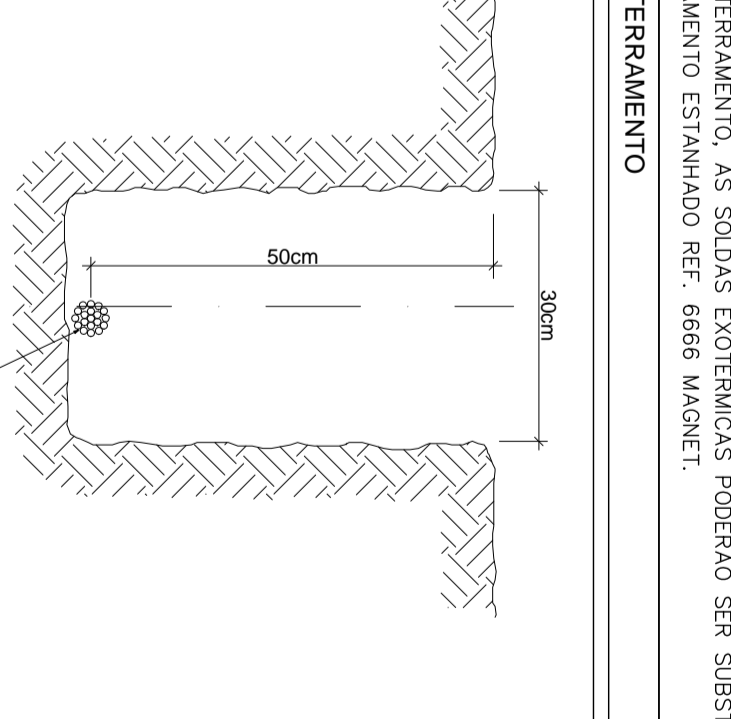
PARA CABO DE COBRE NÚ 70mm<sup>2</sup>



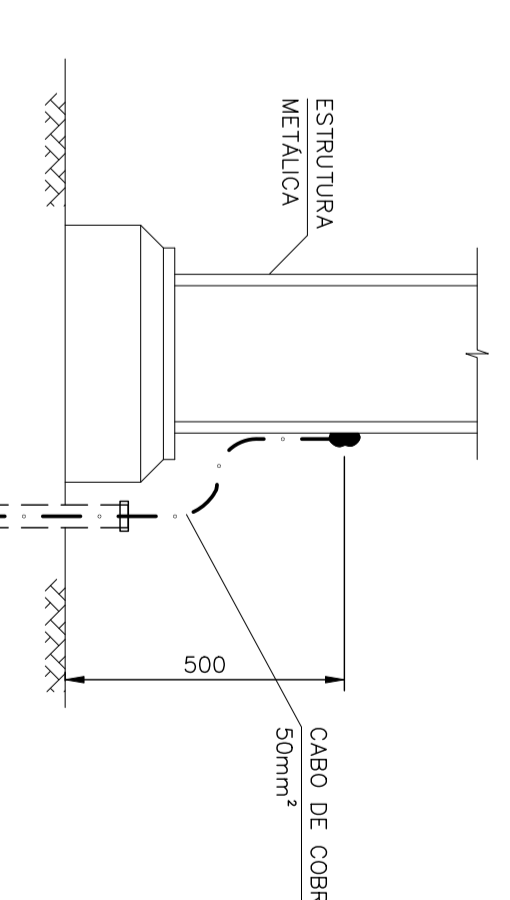
### AMARRAÇÃO DAS FERRAGENS DOS PILARES



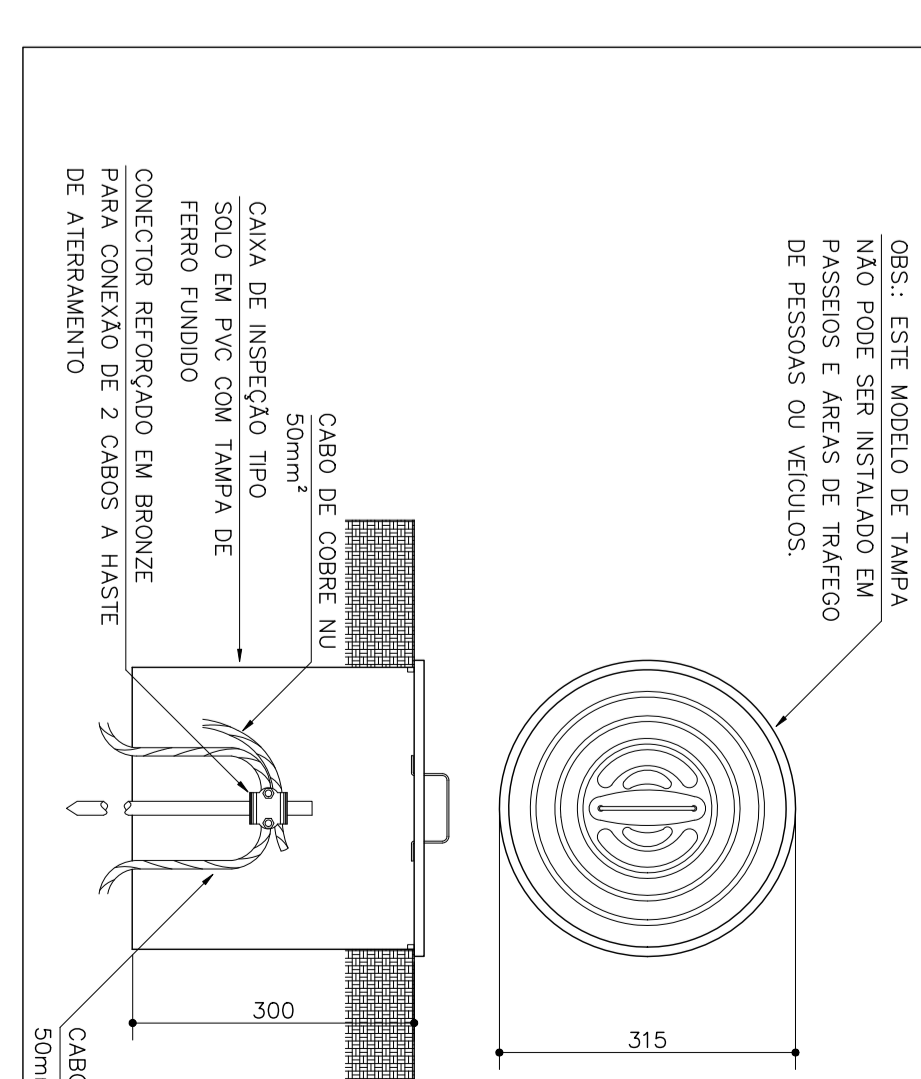
DETALHE DA HASTE DE ATERRAMENTO



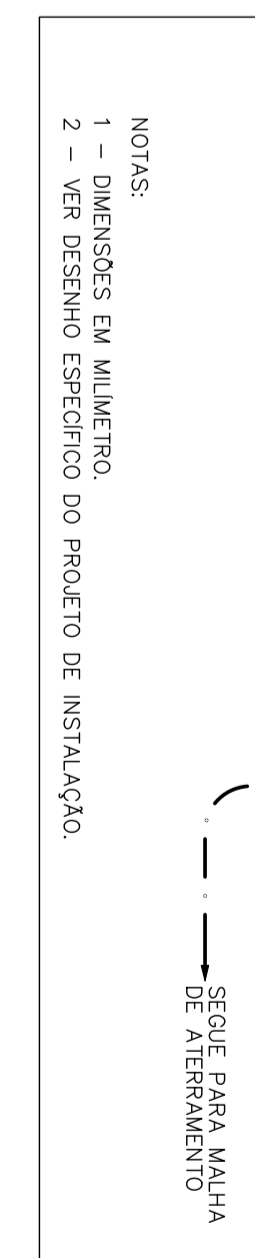
**DETALHE DE ATERRAMENTO DE ESTRUTURAS METÁLICAS**



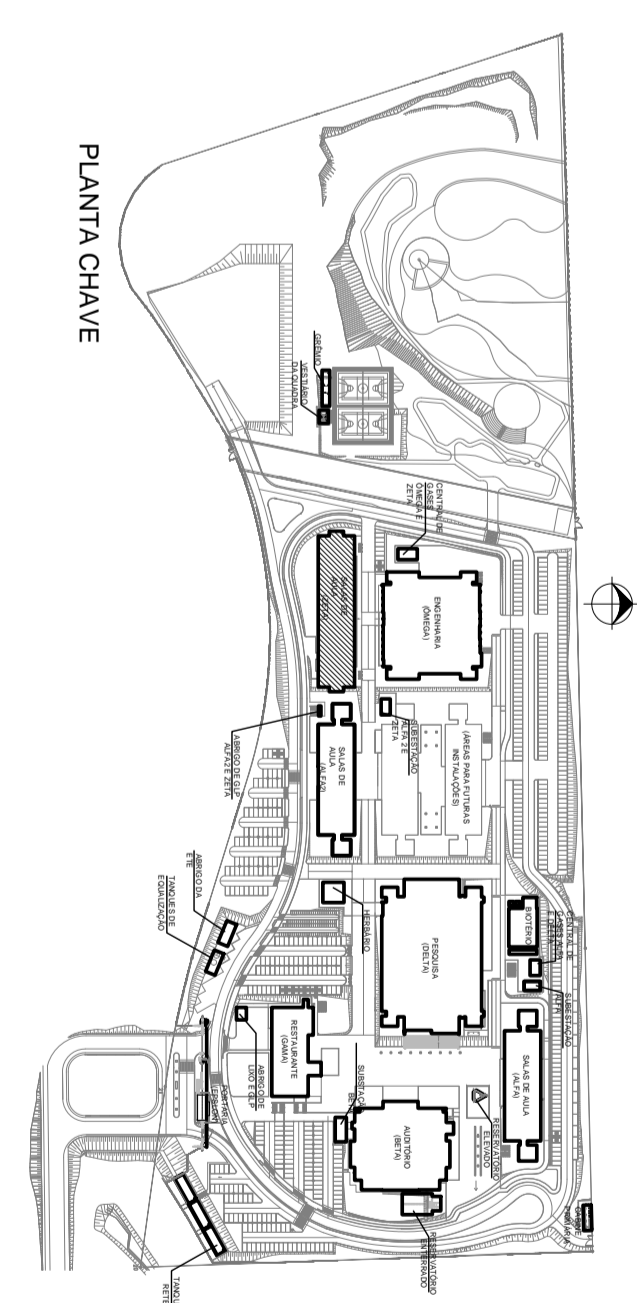
**DETALHE DE ATERRAMENTO DE ESTRUTURAS METÁLICAS**



DETALHE DE INSTALAÇÃO DE CAIXA DE INSPEÇÃO TIPO SOLO



NOTAS:



PLANTA CHAVE

CAIXA DE DISTRIBUIÇÃO TERMINAL

CAIXA DE COBRE NA 1ª LINHA DE ATERRAMENTO

BARRO CLAY DE ALUMINIO NA SÉTIMA LINHA DE COBRE SOBRE A COBERTURA

MADEIRA DE COBRE 25X100mm (25X100MM)

CAIXA DE INSPEÇÃO PARA ATERRAMENTO

SALA DE ELETRICIDADE

PRIMEIRO DE PAINELADO SOBRE

PRIMEIRO DE PAINELADO DESE

CAIXA PARA ATERRAMENTO 1ª LINHA DE ATERRAMENTO

## LEGENDA

## NOTAS

- [illegible]